

The image shows the interior of a Gothic cathedral. The architecture features high, vaulted ceilings with ribbed arches and stone walls. A large, ornate organ with red and silver pipes is positioned on a raised platform in the center. The floor is made of dark stone tiles, and rows of dark wooden pews are arranged on either side of a central aisle. Stained glass windows are visible in the upper sections of the walls. The lighting is dramatic, highlighting the textures of the stone and wood.

Adapter

October 2016 Volume 62 Issue 01

Vancouver Washington
Film Pack Camera Club



Columbia Council of
Camera Clubs

<http://columbiacameraclubs.org/>

Film Pack Camera Club FPCC

A dapter



Photographic Society of
America

<http://psa-photo.org/>

Editor: Jon Fishback., APSA, FP, ARPS jpf1@aol.com

Volume 62 Issue 01 October 2016

Club Officers:

President—John Craig jc_craig06@comcast.net

Vice President—Frank Woodbery VANCWA@Comcast.net

Secretary Treasurer—James Watt tirnaog3@gmail.com

Social Chair—Sandy Watt saendibruder@gmail.com

Field Trip Chair—Rick Battson Rbattson@comcast.net

Web Co-Chair—B. Deming & D. Fischer rfdeming@comcast.net

Touchmark Rep.: Ray Klein mklein@pacifier.com

(Cntrl. Click to send email.)

Inside *A dapter*

Page:

Content:

- | | |
|-----|-----------------------------------|
| 3. | Last Month Print night results |
| 4. | Last Month Print night top scores |
| 5. | Contd. |
| 6. | Contd. |
| 7. | Last Month EID Year to Date |
| 8. | Last Month EID Top Scores |
| 9. | Contd, |
| 10. | Touchmark car show |
| 11. | Contd. |
| 12. | Before and after |
| 13. | Contd. |
| 14. | FPCC picnic |
| 15. | Field Trip Fun |
| 16. | Contd. |
| 17. | Contd. |
| 18. | Field Trip Report |
| 19. | New Seasons Print Display |
| 20. | Book Deals at <i>Abe Books</i> |
| 21. | Judges corner |
| 22. | Cool stuff |
| 23. | Misc. & Board Minutes |



Touchmark Car Show—Page 9

Sandy Watt

Cover: George Clark

Meetings will be held the first and third

Tuesday, 7:30 PM, at Touchmark

2911 SE Village Loop, Vancouver WA. - [Touchmark Web Site](#) (Cntrl. Click)

[FPCC Web Site](#) and calendar (Cntrl. Click)

Goodies list and Schedule:

10/04 J. & S Watt

11/01 R. Belt B. Schaper

12/06 G. Clark

10/18 R. Batson

11/15 T. Campbell

12/20 S. Cornick

**The above folks are responsible for bringing snacks and juice to the meeting.
If you cannot bring goodies please call Sandy Watt 309-750-4351 and arrange a swap.**

Last Month Print Night - Results YTD

Year to date Color

Color Print Chair: Don Funderburg
dfunde3280@yahoo.com

Large Color	
Cal Schuler	42
Don Funderburg	44
Doug Fischer	47
Grant Noel	41
Jan Pelkey	45
Mark Shugert	44
Michael Anderson	46
Ray Klein	20
Tali Funderburg	21
Tim Morton	47
Wayne Hunter	43
Small Color	
Bev Shearer	43
Cal Schuler	41
Don Funderburg	41
Grant Noel	42
Jan Eklof	47
Michael Anderson	43
Stephen Cornick	19

Year to date Mono.

Mono Print Chair: Doug Fishcher
cdfisc@comcast.net

Large Mono	
Cal Schuler	22
Don Funderburg	41
Doug Fischer	39
Grant Noel	41
Jan Pelkey	24
Michael Anderson	43
Tali Funderburg	20
Tim Morton	42
Small Mono	
Bev Shearer	21
Bev Shearer	21
Cal Schuler	18
Don Funderburg	43
Grant Noel	44
Jan Eklof	20
Michael Anderson	44

I stayed up all night to see where the sun went.
Then it dawned on me.

Get out of that frame of mind of trying to make
someone else happy.”

Joe Buissink

Last Month Print Night - Top Scores



Tim Morton



Don Funderburg



Grant Noel



Jan Pelkey

I tried to photograph some fog. I mist

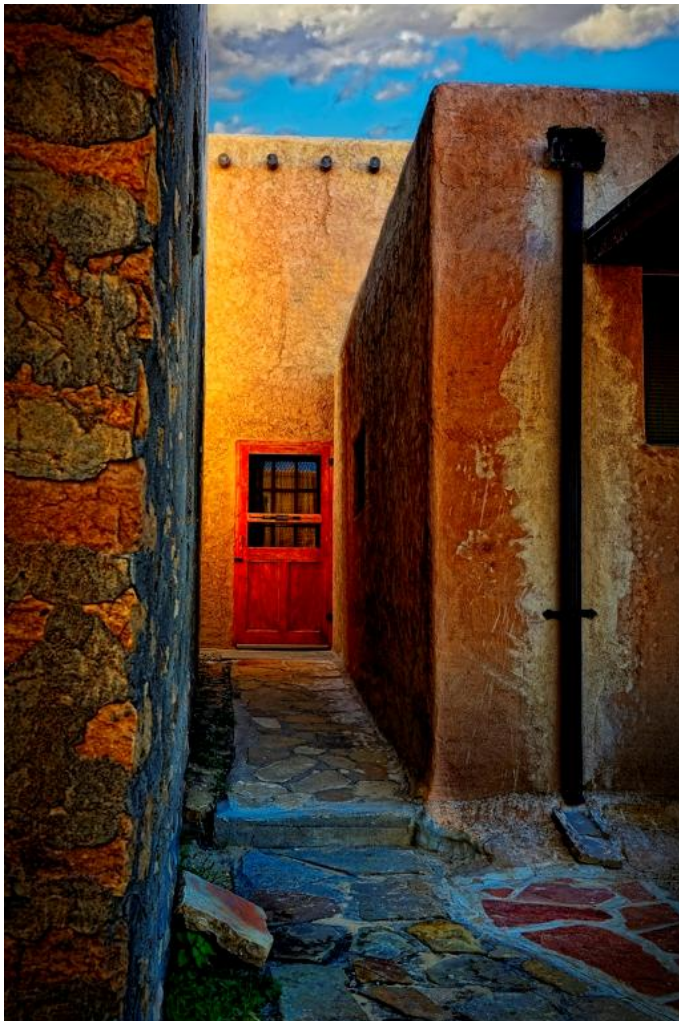
Last Month Print Night - Top Scores



Doug Fischer



Grant Noel



Michael Anderson



Jan Pelkey

Last Month Print Night - Top Scores



Don Funderburg



Jan Eklof

Last Month EID Night - Results YTD

MAKER	MONO	THEME	OPEN	TOTAL
Battson, Rick	21	19	43	83
Campbell, Tammy	21	23	45	89
Clark, George	0	20	45	65
Cornick, Stephen	23	0	42	65
Craig, John	20	23	45	88
Deming, Bob	20	22	44	86
Deming, Sharon	23	26	48	97
Eklof, Jan	23	22	45	90
Fischer, Doug	22	24	45	91
Fishback, Jon	23	22	42	87
Fishback, Rachel	22	18	42	82
Funderburg, Don	19	21	44	84
Klein, Ray	23	18	42	83
LaBriere, David	21	22	41	84
Moore, Lee	20	22	43	85
Morton, Tim	21	23	43	87
Noel, Grant	20	18	42	80
Pelkey, Jan	23	22	47	92
Rupp, Katie	22	21	46	89
Schuyler, Cal	23	0	42	65
Shugert, Mark	21	22	46	89
Watt, James	21	20	41	82
Watt, Sandy	20	20	41	81
Woodbery, Frank	21	21	42	84

“A photographer is like a cod, which produces a million eggs in order that one may reach maturity.”

George Bernard Shaw

Last Month EID Night - Top Scores



Doug Fischer



Doug Fischer



Lee Moore



Sharon Deming



Sharon Deming

Last Month EID Night - Top Scores, contd.



Sharon Deming



Jan Pelkey



Tammy Campbell



Bob Deming

Touchmark Car Show

The Film Pack Camera Club Star Photographers for the Touchmark Classic Car Auto Show, on June 18th, 2016, turned out a remarkably diverse group of pictures of the event. Bob Deming's opening salvo, of cars entering the gates of the Touchmark Retirement Complex, kicked off the beginning of a group of photo's entered into the "Face book FPCC Study Group" slide show. Then John Craig lifted his camera high above heads to capture dazzling views of the front entry garden area of the facility. James and Sandy Watt's picture's of the interior and exterior activities and close up trophy awards were exciting! Frank Woodbury seemed to be everywhere

during the event, producing the greatest number of images. His stunning picture, from one of the second story apartment windows, became a show stopper, superior enough to be selected for the single photo cover of the DVD, containing everyone's images, which was delivered to the Touchmark's Michelle E. Avdienko - Life Enrichment Director. The FPCC Team turned out nearly 100 pictures which were delivered a few days after the event. A fabulous showing which was greatly appreciated by the entire Touchmark Life Enrichment Team.

Ray Klein mklein@pacifier.com
Senior A dapter Correspondent



Bob Deming



Sandy Watt



Bob Deming



John Craig



Frank Woodbury



Frank Woodbury

Touchmark Car Show—Contd.



James Watt



John Craig



Sandy Watt



Frank Woodbury



Frank Woodbury



Frank Woodbury

Before and After

Editing a cluttered Car Picture for Display Using Photoshop Elements 11 Images and text - Bob Deming

The original picture of a classic pre-World War II AC roadster was taken in the courtyard of the Portland Art Museum. This image is cluttered with a yellow car in the background, a placard in the windshield and some shrubbery intruding on the left (see figure1).

The first step in eliminating the clutter in this image is to outline the yellow car very accurately using the Quick Selection Tool. Because the selection itself cannot be moved without the image, convert to the Marquee Tool. Now with a left click move the selection up onto the bricks being very careful to align the selection with the bricks just as it was when it was around the yellow car.



Before



Figure 2

Now using the Control, Alternate and Left Click, drag the selected patch of brick over the yellow car. (See figure 2). If you have chosen the brick pattern well, the bricks will line up when the yellow car is obscured. (See figure 3).



Figure 3

Note that although the yellow car is almost completely obscured, a small amount of it and its shadow are still showing. Again using the Quick Selection Tool and the Marquee Tool go pick up enough brick to cover the remainder of the car. Now you have too much brick and the shadow is still showing. (See figure 4)



Figure 4

Before and After continues on next page.

Repeating the technique with the Quick Selection and Marquee tools, pick up a piece of pavement which approximately matches the color of the pavement to the right of the front tire and move it into position so the brick wall appears to continue behind the car. You can use the Polygonal Lasso Tool to get a straight edge where the brick wall intersects the pavement. Mismatch in pavement color can be smoothed with the Blur Tool or the Clone Stamp tool at less than 100% opacity. (See figure 5)



Figure 5

To get rid of the placard in the windshield, use the same technique, outline it carefully with the Quick Selection Tool or the Polygonal Selection Tool, then pick some brick wall with the selection, and move it into place of the placard. The critical trick here is to preserve the windshield wiper. Shaping the selection around it is



Figure 6

difficult but necessary. With the bricks in place, you can extend the windshield frame from both the left and the right using the Clone Stamp Tool, carefully preserving the highlights. See Figure 6. Note that the brick pattern is shifted vertically.

Correcting the brick pattern is done by clone stamping from left to right. At the same time, the glare pattern on the right of the windshield can be tapered to the left using the Clone Stamp Tool at about 75% opacity. These last operations are done as a series of approximations. If you make a misstep, you can always back out with Photoshop. Figures 7, 8, and 9 illustrate the process. The shrubbery in the left of the picture can be cropped out at any time. Here it was done between figures 8 and 9. Figure 10 is the picture finally submitted for judging. After reducing the resolution to 1024 by 768, it was sharpened using one pixel radius and 50%, and the contrast increased slightly.



Figures 7



Figures 8



Figures 9



After

FPCC Picnic - Editor



Just the beginning of setting up the food



The camera club clan enjoying the fine food.



Ray Klein provided a nice table top setup for members



One version of the setup.



Bob Deming using the setup.



Rick Battson taking advantage of Don Funderburg's portrait setup, which consisted of two models and props.

Good food and fellowship was evident at the FPCC annual picnic and new season kick-off. The weather was wonderful with sun and calm breezes.

Everyone is looking forward to the first meeting of the new year on September 6th.

Field Trip Fun

Hughes Water Garden Field Trip

Rick Battson, FPCC Field Trip Organizer, arranged to do a field trip to Salem, to the Hughes Water Garden on Saturday 07/16/ 2016. Several members met at the usual Fred Meyer gas station parking lot and proceeded to Salem shortly after 12:00 Noon. Once at the water garden they met several other FPCC members who had already decided to do the trip on their own.

The water garden was a delightful location at that time since all the water lily flowers were in bloom and open in the afternoon sunlight. The crew virtually had the garden to themselves. Practically no other visitors were to be found, giving the photographers totally open access to any of the views available. The flowers were located inside large hot house like structures with good ventilation, allowing for moderate air circulation around the plants, without too much movement to the flowers themselves. Tripods could be used adequately with good walkway access.

Most of the afternoon was utilized shooting the lovely flowers for which the photographers will have a good selection of images for which to compete in the FPCC competition meetings.

Ray Klein mklein@pacifier.com
Senior *A dapter* Correspondent



Rick Battson working with his tripod.



Mike Kuhl, lines up for an overhead shot of one of the floating delights.



Frank Woodbury checking out a scene.



Tim Morton in the foreground
Sharp Todd on the edge of the pond.



One of the more exotic lilies

Field Trip Fun—Contd.

Fort Vancouver Centennial Celebration

Story & photos by Ray Klein mklein@pacifier.com

Senior *A dapter* Correspondent

Rick Battson, FPCC Field Trip Coordinator, managed to organize a trip to Fort Vancouver, for the Centennial Celebration, planned by the Vancouver Park Commission, on August 27, 2016. A few members of the club attended the event along with a sizable and interested amount of the public. The Fort personnel were costumed in the appropriate garb of the period and presented quite a few interesting faces.

The Fort gate was promptly opened at 9:00 AM on that morning. A beautiful bright blue sky and cool breezes plus moderate temperatures greeted the club and other guests. At first, finding out information about the location of various activities was somewhat sketchy, but Rick doggedly tracked down the right people to put the club members in the right spot for the best photographic opportunities.

The big event, offering the greatest photo possibilities, was the firing of the cannon, for “Black Smoke,” which was the highlight of the various demonstrations. This had been scheduled to occur in another spot of the Fort at 10:00 AM, but was rescheduled for a different location to take place at 11:00 AM, and was right on time for the demonstration. The FPCC camera crew was delighted and found their expectations fulfilled.



Roseanne, the Fort Clerk in person.



Rick Battson, field trip



An interesting face,



A young member of the cavalry



Another action character.



An officer and his men.



Musket firing.



Explaining the canon preparation.



Sword demonstration

Field Trip Fun—Contd.



Officers discussing tactics.



Loading a rifle.



Preparing the canon for firing



Firing the canon



Steve Cornick and Mark Shugert



More action for Steve and Mark

Field trip Report

Images and Text - Rick Battson

The 2016 season started off with an evening shoot of Mt Hood from Sherrard Point on Larch Mountain. The Idea was to capture the Full moon rising over Mt Hood.

The Moonrise was slower than expected and didn't show while the mountain was illuminated with vivid late evening sunlight.

The next trip took us to Silver Falls State Park for waterfall photography.

In mid-July we went to Salem Oregon for the annual "Rust-o-Rama". We photographed several classic cars and a few 'Rat-Rods' David Labriere was kind enough to give us some Pro-Tips on Car Photography.

Early August we went to Canby Oregon to visit the Hughes Water Gardens. We photographed numerous healthy water lily species including some exotic tropical species.

A week later we went to Chrystal Mountain Resort for Alpine Lake Photography.

Tipsoo Lake and The Sunrise Scenic Area were captured in early morning light. Reflection Lake, on the other side of Mt Rainier, was captured in the mid to late afternoon light.

Mid-August we traveled to the Palouse Region in Eastern Washington.

The temperature was in the 90s but we captured several nice images of the unique rolling hills, home to numerous old barns and farmsteads. And we were positioned to see the Wheat Harvest in good light on the photogenic hills.

Late August we went to visit The Historic Fort Vancouver during the Centennial Celebration.

A few days later we went to The Swan Island Dahlia Farm in Canby Oregon.

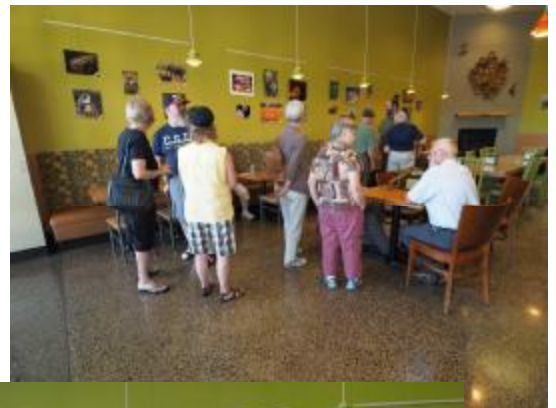
We got a few Dahlia Specimen tips from two of the official Dahlia Judges.

Field trip information can be found on the FPCC Website Calendar.

The "more detail" section, for future Field Trips, is completed as time allows.



New Seasons Print Display

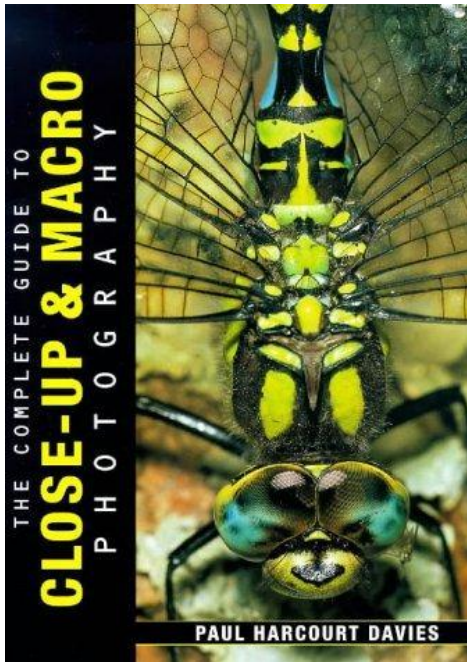


Film Pack Camera Club uses the New Seasons Community Room at McGillivray and 164th Avenue for board meetings. New Season's Community Coordinator Leeann O'Neil invited FPCC to hang prints in their Deli eating area reserved for local artists to display their work. Seven FPCC Print makers contributed 40 prints for the month of August. On Tuesday August 16th, New Seasons sponsored an Artist's reception with light refreshments from 5:30 to 6:30 pm. If you missed the reception, but get a chance to stop by to see the display, it will hang through the month of August.

John Craig jc_craig06@comcast.net
A dapter Correspondent



Book Deals From *Abe Books*



[The Complete Guide to Close-up and Macro Photography \(Cntrl. Click\)](#)

Paul Harcourt Davies

Published by David & Charles 30/09/1998, 1998

ISBN 10: [0715308009](#) / ISBN 13: [9780715308004](#)

Used

Quantity Available: 3

From Fun_Meister (Wallingford, United Kingdom)

Price: **US\$ 3.81**

Shipping: **US\$ 2.29**

This guide to close-up and macro photography is designed to provide photographers of all abilities with the tips, hints and technical inspiration they will need to enhance their skills. A full survey of the tools of the trade - camera, lenses, films, and accessories - is followed by explanations of the essential exposure, lighting and composition techniques required to produce vibrant and

successful images.

[Extreme Close-Up Photography and Focus Stacking \(Cntrl. Click\)](#)

Cremona, Julian

ISBN 10: [1847977197](#) ISBN 13: [9781847977199](#)

New

Quantity Available: 5

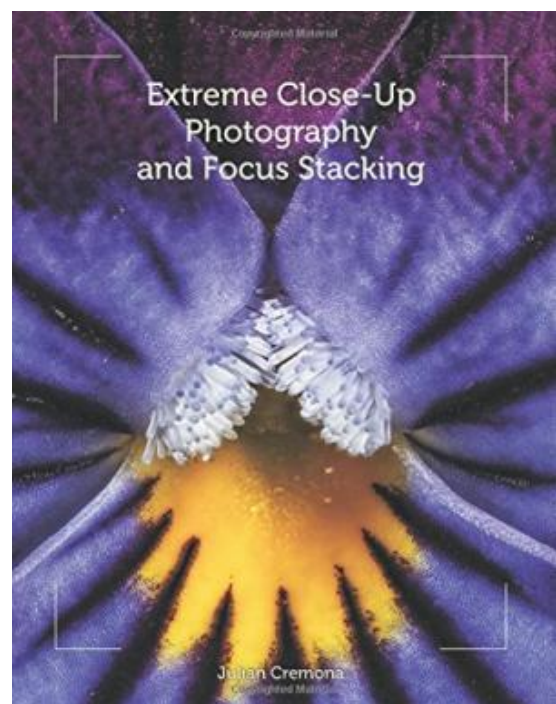
From: [GreatBookPrices](#) (Columbia, MD, U.S.A.)

Price: **US\$ 14.46**

Shipping: **US\$ 2.64**

Within U.S.A.

This practical book explains what is meant by macro photography and how to get even closer to your subject: not just a close-up of a butterfly, but details of the eye and wing scales. These techniques, suited to any budget, look at ways to photograph virtually any creature, whether terrestrial, marine, or from freshwater. All the key elements to achieve extreme close-ups are built in a clear way, for both outdoor and studio use, and special attention is given to focus stacking, with both software and further enhancements covered. Aside from explanations on equipment and technique, advice is given on different lighting and support equipment, including the practicalities of tanks and aquatic organisms, and suggestions are offered on how to achieve sharpness, detail, and ultimate depth of



Judges Corner

Judging Chair: Mark Shugert shugertmark@gmail.com

Judges For October:

10-04 J Fishback, J. Craig, R. Battson 10-10 KCCC Away, D Fischer, R. Klein, F. Woodbery (Alt) M. Shugert

This is the new Judges Corner. Each month there will be an image selected and analyzed according to the elements embraced by PSA and camera clubs. In addition there will be a critique of the analysis so you can see how knowledgeable judges formulate opinions to help the maker.

The Elements

Technical Excellence

Composition

Lighting

Color

Impact

Creativity

Presentation

Story



Score

6

The Analysis

I think the bright complementary **colors** (red and green) help to provide visual **impact**. To my eye the curves of the building, sidewalk, and edging around the plants in the foreground serve to integrate the components of the image. To me the foreground plants also provide a **diagonal path** that draws my attention to the interesting house. The image appears to me to be well-**focused** with good **depth of field** from foreground to background.

I feel that the **lighting** is quite **harsh**, with detail lost in the shadows and some blown-out highlights. You might have waited until the sun was lower in the sky. Also, I see a green “blob” on the roof in the upper right-hand corner of the image, and half of a structure, possibly a gazebo, which to me are **distractions**.

Ron Paxton - Analysis Instructor

Notice the red words in the analysis. These represent reference to elements that may help the maker in future competitions, which is what the analysis should be all about.

If you give the score an 8 or 9 there may not be much help needed. If you give a score of 6 or 7 it is best to tell the maker why.

Editor

Cool Stuff

A **tripod** can make a whole lot of difference with any shot you take, which is why you always carry one whenever you spend the day outside taking snaps. And while we don't think the Edelkrone StandPlus will replace it any time soon, we have a feeling some jobs usually reserved for tripods can be better accomplished with this new "camera stand" in tow.



Unlike tripods that will require you to extend it to just the right height and turn a bunch of knobs to lock in place, it comes with pivoting hinges that can maintain their position all on their own. That means, no more time-consuming setups – you simply pull on the stand's legs at the height that you want and start snapping photos.

The Edelkrone StandPlus doesn't just let you adjust the height, as you can also easily adjust how close or how far the camera is positioned from the subject, since the legs can lock even at an angle. There aren't much details yet, so we don't know what angles are possible, but there appears to be a whole load of possible positions, making for quite the versatile photography tool. It uses folding legs that collapse into a 20-inch long base when not in use, with small wheels at the bottom that should allow it to move around like a dolly while you're taking pictures. Granted, those small wheels mean this thing is designed for studios and similarly even grounds, so we doubt it will be of much use if you like taking photos along backcountry trails.

No word yet on availability or pricing, but you can sign up over at [Edelkrone's website](#): (Cntrl. Click)

[Check out this video of a workshop in Southern China with Nick Page.](#)
(Cntrl. Click)

[Adorama Aputure Gigtube, Digital Screen Remote Viewfinder for Canon 5D Mark II Camera](#) (Cntrl. Click)

by Adorama

price: \$51.06 + \$3.88 shipping

The Aputure Gigtube is an innovative device that offers a camera remote with an LCD liveview screen built in! These units are compatible with any camera that has the liveview option. The screen rotates to accommodate almost any viewing angle needed. Great for: Product Photography; Portrait Photography; High/Low Angle Photography; Astrophotography/Infrared Photography.



At our Film Pack Camera Club board meeting, Ray said he is looking forward to getting pictures for the Oktober Fest Celebration.

Film Pack members are wanting more programs to broaden their knowledge and interest in photography. It was decided to ask for some additional Tuesdays at Touchmark. in the coming months:

Tuesday November 8th at 7:30 4Cs Mono Print Judging Program

Tuesday November 29th at 7:30 Image Critique Night where members send in image for the group to discuss much like we do after print and EID competitions except we will offer live editing and more in-depth discussions.

Tuesday December 13th at 7:30 4Cs Club EID Judging Program

Sandy Watt our Social Director will be talking to Touchmark, about arrangements for our Christmas Celebration in December.

The Board members have decided to talk to Touchmark about scheduling the second Tuesday of each month as an ongoing regular time for the club to meet. This would give us a regular time for programs and workshops to give members a richer experience..

Additionally the board discussed routine things like the Christmas Party, financial report, new membership, field trips and doing Touchmark's staff portraits in January.

John Craig
President
Film Pack Camera Club

LEARN WITH PSA

[Online Courses](#)
[Image Evaluation](#) Services
[Study Groups](#)

One-on-One with a [PSA mentor](#)

[Chapter Workshops and Outings](#)

Access all as a privilege of membership.

[Cntrl. Click to visit the web site](#)



PSA Rep.: Jon Fishback jpf1@aol.com



4 C's Rep.: John Craig jc_craig06@comcast.net

